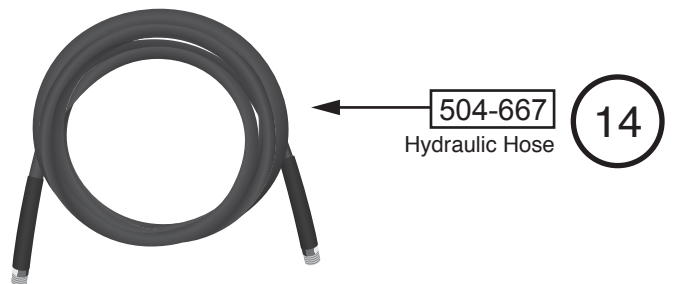
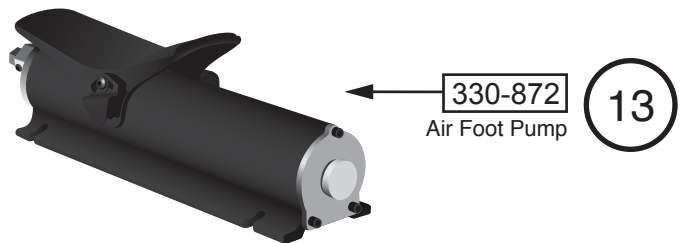
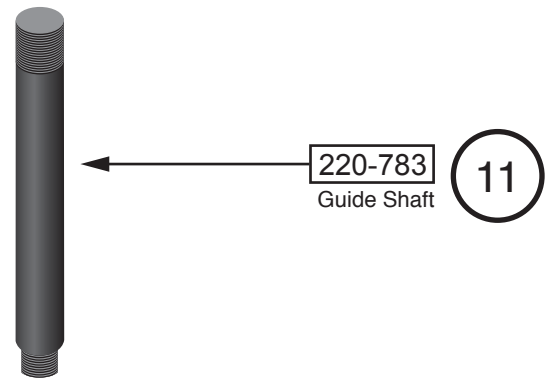
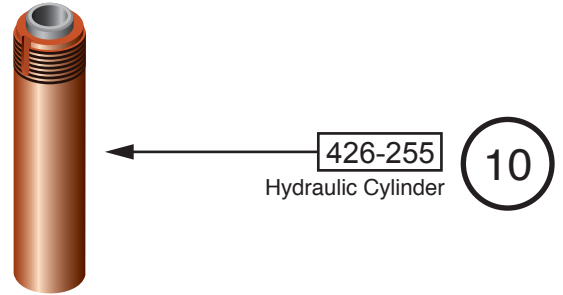
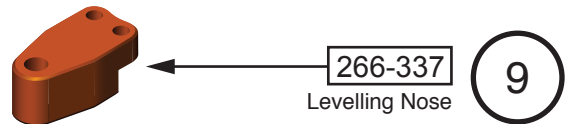
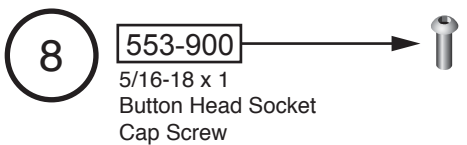
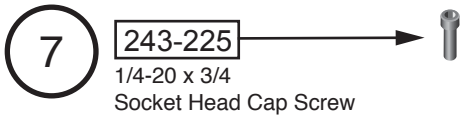
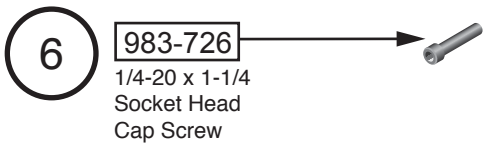
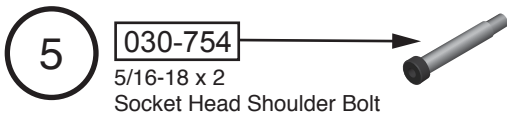
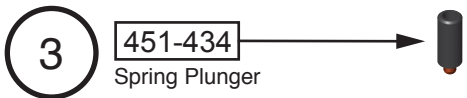
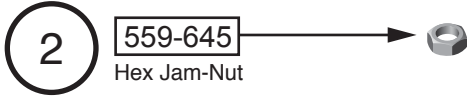
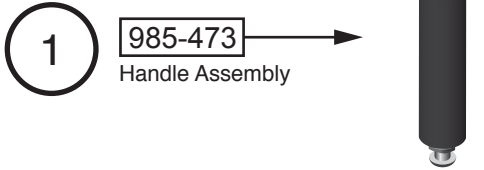


Part Number  
Illustration Number PitBull BigDog™ Stone Shear Replacement Parts





Part Number

PitBull BigDog™ Stone Shear Replacement Parts

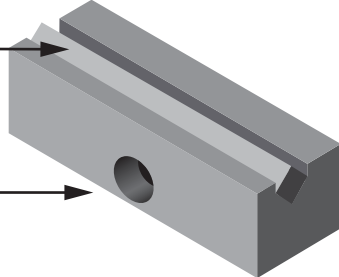
15 980-304 Teeth Set for Laminated Stone

420-617

3 inch Long Carbide

556-161

Tooth Holder for Laminated Stone



18 944-481 Scallop Teeth Set

530-873

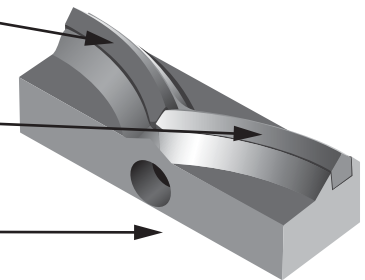
Left Scallop Carbide

612-894

Right Scallop Carbide

649-189

Scalloped Tooth Holder



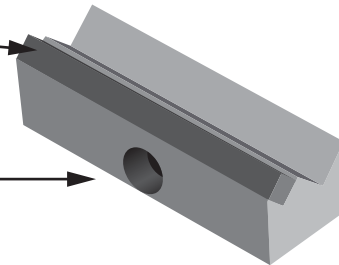
16 365-421 Teeth Set for Soft Stone

420-617

3 inch Long Carbide

530-530

Tooth Holder for Soft Stone



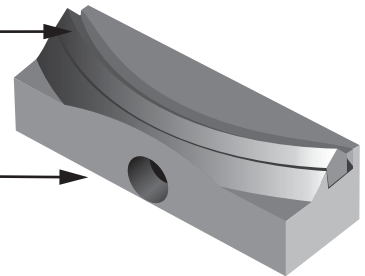
19 076-830 Reverse Scallop Teeth Set

169-818

Reverse Scallop Carbide

628-602

Reverse Scallop Tooth Holder



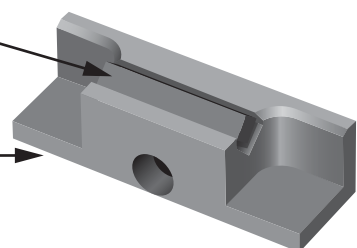
17 673-385 Narrow/Hard Laminated Stone Teeth Set

457-582

1.5 inch Long Carbide

129-198

Tooth Holder for Hard (narrow) Laminated Stone



Each Set includes two tooth holders with their respective carbide.