

THE RED RIPPER ULTRALIGHT™

Stone Router



Operation, Safety, and Instruction Manual

v20140617



TM

ΩMEGA DIAMOND, INC.

10125 OPHIR RD
NEWCASTLE, CA 95658-9504

1-888-996-4777 (530) 889-8977
FAX (530) 885-3785

WWW.OMEGADIAMOND.COM

SALES@OMEGADIAMOND.COM

Operating/Safety Instructions

IMPORTANT: Read Before Operating Equipment

To avoid accidents or injury, keep work area clean, well lit, and well ventilated.

Always wear eye, hand, and all other appropriate protective apparel when operating router.

Keep all other people, children, and animals away while operating router.

Use only properly grounded, GFCI protected electrical outlet. See omegadiamond.com for details.

Warning: Do NOT turn machine on or off with the GFCI safety switch. Turn machine power switch off before resetting the GFCI.

Ensure that the electrical system in your work location meets all codes and regulations prior to operating router.

Do not modify the plug on the router or use any adapters between the router and the electrical outlet.

Do not allow water to run directly on the motor or any other electrical component.

If power cord or any other part of the router is damaged, discontinue use immediately until damaged parts can be replaced.

Keep router bit clear of clothing, jewelry, hair, cords, hoses, or any other object while in operation.

Ensure that the router is switched off before plugging or unplugging it.

Ensure that bit is bolted firmly to spindle shaft, and that the spindle shaft spins freely, prior to operating.

Use proper RPM for diamond bits. **SERIOUS** injury can occur if bits are spun above rated RPM.

Keep hands on top of the router and away from the bit while operating.

Never force the router if it seems to be stuck or if it seems to be moving with difficulty.

Use only bits of correct size and shape. Do not modify bits.

NEVER turn on router while the spindle lock is engaged.

NEVER engage the spindle lock while the spindle is turning.

INSPECT bits before each use for cracks or other defects.

Make sure that the guide bearing in the bit spins freely.

Inspect bottom rubber surface of router for grit and/or damage before use.

Do not force bolts; most have been assembled with a cyanoacrylate for safety.

Operating Instructions

General Operation

- Before placing the router on your stone, make sure that the rubber base is cleaned of any debris that may be attached.
- Allow the router to overhang enough for the bit to clear the stone where you will begin your cut.
- Turn on water to begin hydro-flotation.

WARNING: Excessive pressure will cause the router to “bounce” slightly, rippling the cut. Tune float valve until router just floats evenly on the stone.

- Adjust the bit height to provide the shape that you want, or to match to an existing cut.
- Turn the water valve on and position the stream directly on the left side/cutting edge of the bit where it meets the stone.
- Turn router motor on before bit touches the stone.
- Slowly begin your cut by pushing the router into the stone. By entering the cut too fast, the router may bog down and may trip the electrical breaker. You might also prematurely groove your diamond bits.
- Push the router across the stone by using the following handle. Don't try to pull it across using the forward handle as this could cause the base to go dry on the forward side and cause binding and an uneven cut.
If you are moving the router from left to right, push the router using the left handle. Conversely, if you are moving the router from right to left, push the router using the right handle.
- Use even pressure all along your cut for the best results.

Installing/Replacing Bits

Note: *This router is designed for stone and masonry applications exclusively. Use only diamond bits with 7/8 inch arbor hole and an M10-1.5 bolt.*

Place the router on a table leaving clearance on the front for installing or removing the bit.

Insert a ¼ inch pin or ground-off screw driver into one of the spindle lock holes located on the template guide at the bottom of the spindle. DO NOT use the lock in the motor to stop the spindle as using the motor stop can cause the spindle to eject. Rotate bit/spindle until lock pin clicks into place or the spindle refuses to turn. Use a 10mm or 3/8 inch (depending on bit manufacturer,) hex wrench to install or remove bit. Once done, remove the ¼ inch pin.

Replacing The Motor

Please see our website at www.omegadiamond.com for information on how to replace the motor.

Troubleshooting

Bit seems to be cutting slowly or not cutting at all?

The material being cut may have “flattened” or “glazed” the diamond. Use a dressing stone or “green stone” to free the diamond.

Router shuts off after a few minutes of use and/or fails to turn on at all.

Check circuit breaker.

Spindle and motor wont raise to its full height.

Make sure the motor is straight so that the stainless steel water shield is unobstructed.

For any other problem please call us toll free:

1 (888) 996-4777

Or visit OmegaDiamond.com and browse our Tutorials/How To section.

Ordering Replacement Parts

Is your bit worn out? Want a spare? Give us a call and we will be happy to take your order. A list of replacement parts is available through our website. Also see our website for ordering, pictures, How To information, videos, and more!

Toll Free: 1 (888) 996-4777

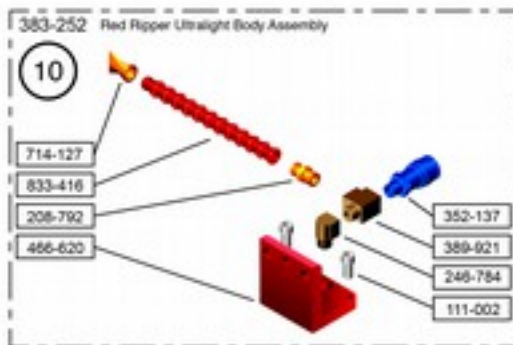
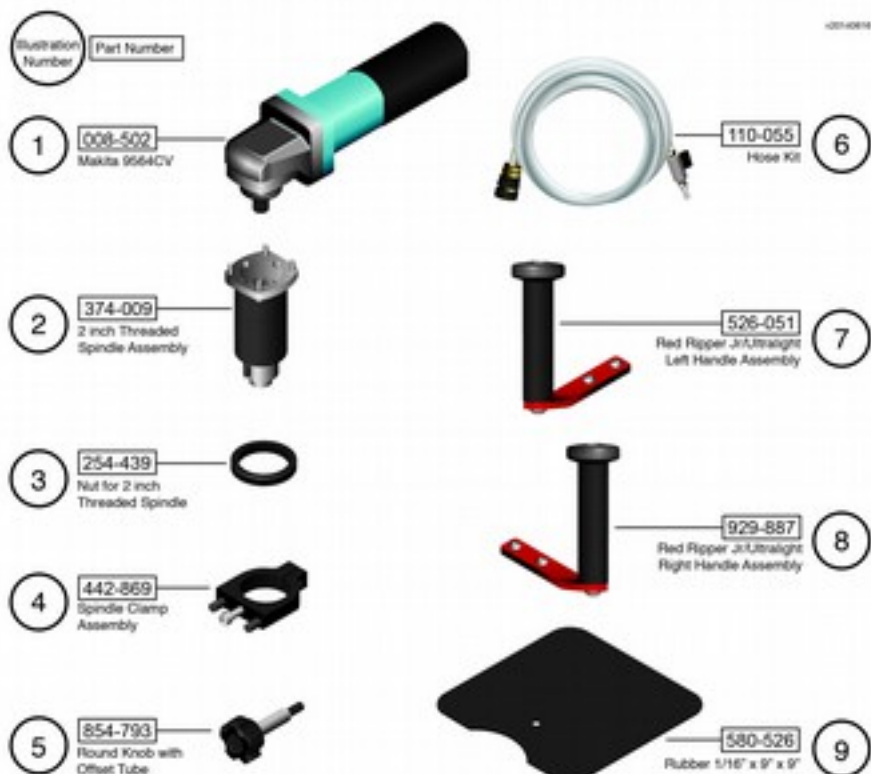
Fax: 1 (530) 885-3785

Web: OmegaDiamond.com

Email: sales@omegadiamond.com



101-0016



Limited Warranty

All models of the Red Ripper Ultralight are warranted against defects in workmanship in materials for a period of 6 months from date of purchase.

All returns will be subject to damage/usage fees and a 20% restocking fee. Freight charges are non-refundable. Any motors/grinders are excluded from this warranty and are covered under their respective manufacturer's warranties if available.

OMEGA DIAMOND, INC. will, under warranty, provide free factory service including parts, labor, and UPS GROUND SERVICE back to the customer for any malfunction of its units. Returned units should be packed in the ORIGINAL shipping packaging. Customers are required to call prior to returning any unit for either warranty or non-warranty service. We may be able to save you the inconvenience of shipping the unit back to us.

Shipments should be sent freight prepaid and insured for replacement cost to:

**OMEGA DIAMOND, INC.
10125 OPHIR RD.
NEWCASTLE, CA 95658-9504
PHONE: (530) 889-8977 – FAX: (530) 885-3785**

Please record the Date of Purchase and the Serial Number of your machine here for future reference:

Date of Purchase:

Serial Number:

User Notes

Notice: This product may have been field tested for quality control purposes.

Red Ripper Ultralight™ Manual

Copyright© 2013 Omega Diamond, Inc.

All Rights Reserved.

*****WARNING*****

Not following all of these instructions and warnings included in this manual may result in Injury or Death. Omega Diamond, Inc. and all related Companies and personnel cannot be held responsible for any damages incurred by the installation, use, and/or maintenance of this product.

The Red Ripper, Red Ripper Jr, Red Ripper Ultralight, and the Omega Diamond Logo are legal trademarks of Omega Diamond, Inc. All Rights Reserved.

This Document may not be Copied or Distributed, in Part or in Whole, Manually or Digitally, without the prior written Consent of the Copyright Holder.