

THE RED RIPPER™

Stone Router



Operation, Safety, and Instruction Manual



ΩMEGA DIAMOND, INC.

10125 OPHIR RD
NEWCASTLE, CA 95658-9504

1-888-996-4777 (530) 889-8977
FAX (530) 885-3785

WWW.OMEGADIAMOND.COM

SALES@OMEGADIAMOND.COM

Operating/Safety Instructions

IMPORTANT: Read Before Operating Equipment

To avoid accidents or injury, keep work area clean, well lit, and well ventilated.

Always wear eye, hand, and all other appropriate protective apparel when operating router.

Keep all other people, children, and small farm animals away while operating router.

Use only properly grounded, **GFCI protected electrical outlet**. See omegadiamond.com for details.

Warning: Do NOT turn machine on or off with the GFCI safety switch. Turn machine power switch off before resetting the GFCI.

Ensure that the electrical system in your work location meets all codes and regulations prior to operating router.

Do not modify the plug on the router or use any adapters between the router and the electrical outlet.

Do not allow water to run directly on the motor or any other electrical component.

If power cord or any other part of the router is damaged, discontinue use immediately until damaged parts can be replaced.

Keep router bit clear of clothing, jewelry, hair, cords, hoses, or any other object while in operation.

Ensure that the router is switched off (switch down) before plugging or unplugging it.

Ensure that bit is bolted firmly to spindle shaft, and that the spindle shaft spins freely, prior to operating.

Use only diamond tools designed for 8,500 RPM OR HIGHER ONLY. **DO NOT use resin, rubber or fiber type bits.** SERIOUS injury can occur.

Keep hands on top of the router and away from the bit while operating.

Never force the router if it seems to be stuck or if it seems to be moving with difficulty.

Use only bits of correct size and shape. **Do not modify bits.**

NEVER turn on router while the spindle lock pin is pressed.

NEVER press the spindle lock pin while the spindle is turning.

INSPECT bits before each use for cracks or other defects.

Make sure that the guide bearing in the bit spins freely.

Inspect bottom rubber surface of router for grit and/or damage before use.

Do not force bolts; most have been assembled with a thread-locking cyanoacrylate glue for safety.

Operating Instructions

General Operation:

- Before placing the Router on your stone, make sure that the rubber base is cleaned of any debris that may be attached.
- Allow the router to overhang enough for the bit to clear the stone where you will begin your cut.
- Turn on water main valve to begin hydro-flotation.

WARNING: Excessive pressure will cause the router to “bounce” slightly, rippling the cut. Tune valve until router just floats evenly on the stone.

- Adjust the bit height to provide the shape that you want, or to match to an existing cut.
- Turn the bit water valve on and position the stream directly on the left side/cutting edge of the bit where it meets the stone.
- Turn router motor on before bit touches the stone.
- Slowly begin your cut by pushing the router into the stone. If you enter the cut too fast, the router will bog down and may trip the electrical breaker. You will also prematurely groove your diamond bits.

Installing/Replacing Bit:

Note: This router is designed for stone and masonry applications exclusively. Use only diamond bits with 7/8 inch arbor hole and 12mm bolt.

Place the router on table leaving clearance on the front for installing the bit. Turn height adjusting hand wheel clockwise to allow proper bit clearance. (If the hand wheel is hard to turn, loosen brake handle on the left side of spindle housing.)

Press, and hold, the spindle lock pin. Rotate bit/spindle until lock pin clicks into place or the spindle refuses to turn. Use a 10mm or 3/8 inch (depending on bit manufacturer,) hex wrench to remove existing bit.

Slide new bit onto the mounting shaft of the spindle and lock in place with wrench. Release the spindle lock pin.

Troubleshooting

Bit seems to be cutting slowly or not cutting at all?

Suggestions: The material being cut may have “flattened” or “glazed” the diamond. Use a dressing stone or “green stone” to free the diamond.

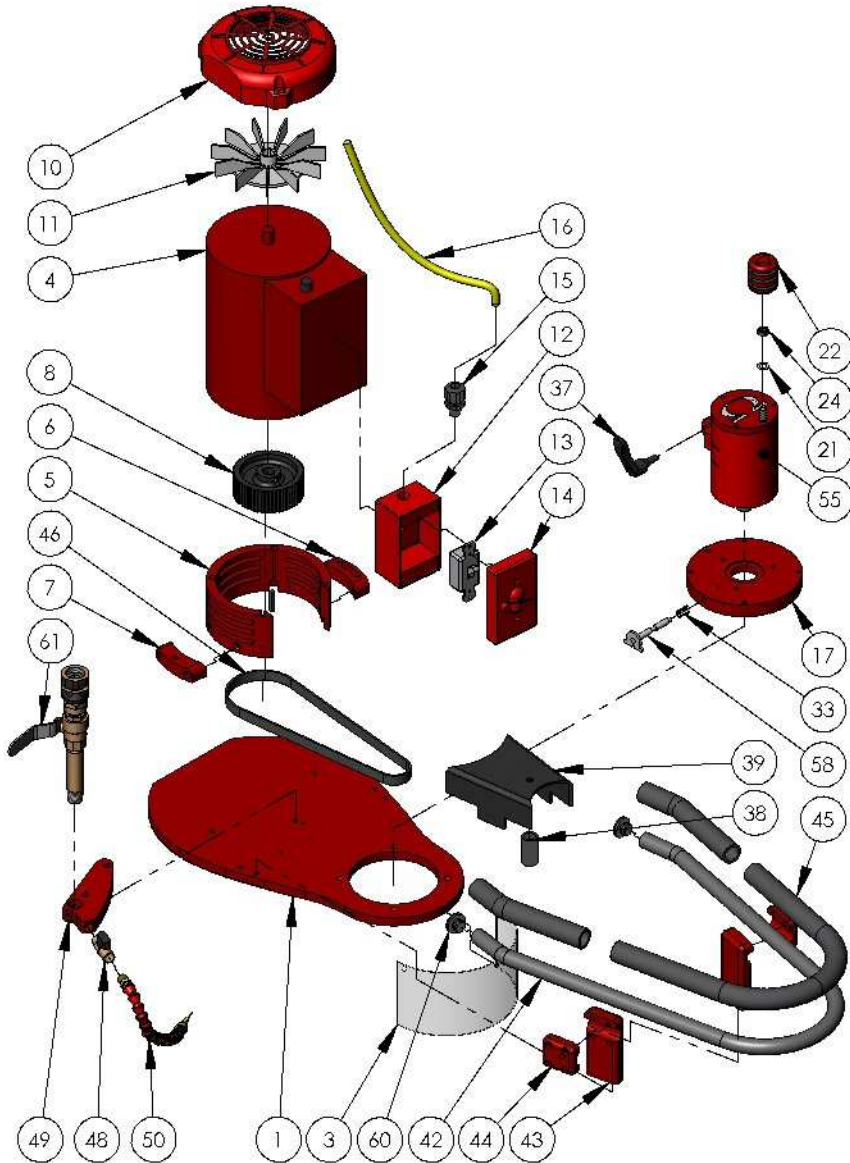
Router shuts off after a few minutes of use and/or fails to turn on at all.

Suggestions: Check circuit breaker. If that is on and it still fails to start, the motor may have overheated. Allow time to cool, then push in Heat Overload button, you will then hear a dry click sound when router has cooled down enough to restart.

Height adjusting hand wheel is difficult to turn.

Suggestions: Loosen the brake handle on the left side of the spindle housing.

Parts Blowup



Bill of Materials

#	PART #	DESCRIPTION	QTY.
1	SP-RRS-001	Base Plate	1
3	SP-RRS-049	Water Shield	1
4	MO-0001 or 3	110/220v AC Induction Motor	1
5	SP-RRS-011	Motor Base Can	1
6	SP-RRS-012-R	Motor Support Ear	1
7	SP-RRS-012-L	Motor Support Ear	1
8	SP-RRS-009	60 Tooth NWS Motor Pulley	1
10	SP-RRS-004	Motor Fan Shield	1
11	SP-RRS-005	Motor Fan	1
12	SP-RRS-006	Switch Box	1
13	SP-RRS-007	Power Switch	1
14	SP-RRS-008	Switch Cover	1
15	FA-1004	Water-Tight Power Fitting	1
16	SP-RRS-051	25' Power Cord	1
17	SP-RRS-013	Spindle Base	1
21	SP-RRS-023	V.A.S. Washer	2
22	SP-RRS-024	Spindle Vertical Adjust System Handle	1
24	FA-0049	3/8-24 Locknut	1
33	SP-RRS-031	Spindle Rotation Lock Spring	1
37	FA-0048	Ratchet-Lock Handle	1
38	SP-RRS-045	PVC Belt Shield Offset	1
39	SP-RRS-044	Belt Shield	1
42	SP-RRS-042	Handle Bar	1
43	SP-RRS-040	Inside Handle Holder	2
44	SP-RRS-041	Outer Handle Holder	2
45	SP-RRS-043	Back and Front Handle Foam	1
46	SP-RRS-032	140 Tooth NWS Belt	1
48	PL-0502	1/4 NPT M-F Ball Valve	1
49	SP-RRS-033	Water Manifold	1
50	SP-RRS-AWO	Hose Assembly	1
55	SP-RRS-SPINDL	Spindle Assembly	1
58	SP-RRS-RL	Rotation Lock Assembly	1
60	Sp-RRS-052	Handle Plugs	2
61	SP-RRS-WC	Water Column Assembly	1

Limited Warranty

All models of the Red Ripper are warranted against defects in workmanship in materials for a period of twelve (12) months from date of purchase.

All returns will be subject to damage/usage fees. A refund is available only within 30 days of purchase. Freight charges are non-refundable.

OMEGA DIAMOND, INC. will, under warranty, provide free factory service including parts, labor, and UPS GROUND SERVICE back to the customer for any malfunction of its units. Returned units should be packed in the ORIGINAL shipping packaging. Customers are required to call prior to returning any unit for either warranty or non-warranty service. We may be able to save you the inconvenience of shipping the unit back to us.

Shipments should be sent *freight prepaid* and *insured for replacement cost* to:

OMEGA DIAMOND, INC.

10125 OPHIR RD.

NEWCASTLE, CA 95658-9504

PHONE: (530) 889-8977 – FAX: (530) 885-3785

Please record the Date of Purchase and the Serial Number of your machine here for future reference:

Date of Purchase:

Serial Number:

User Notes:

Notice: This product may have been field tested for quality control purposes.

Ordering Replacement Parts

Is your bit worn out? Want a spare? Give us a call and we will be happy to take your order. Also see our web site for ordering, pictures, How To information, videos, etc.

Toll Free: 1 (888) 996-4777

Fax: 1 (530) 885-3785

Web: OmegaDiamond.com

Email: sales@omegadiamond.com

Red Ripper Manual

Copyright© 2006, 2008 Omega Diamond, Inc.

All Rights Reserved.

*****WARNING*****

Not following all of these instructions and warnings included in this manual may result in Injury or Death. Omega Diamond, Inc. and all related Companies and personnel cannot be held responsible for any damages incurred by the installation, use, and/or maintenance of this product.

The Red Ripper, Red Ripper Router, and the Omega Diamond Logo are legal trademarks of Omega Diamond, Inc. All Rights Reserved.

This Document may not be Copied or Distributed, in Part or in Whole, Manually or Digitally, without the written prior Consent of the Copyright Holder.