

# THE PITBULL BIGDOG™

*Hydraulic Stone Chiseler*



*Operation, Safety, and Instruction Manual*



## **ΩMEGA DIAMOND, INC.**

10125 OPHIR RD  
NEWCASTLE, CA 95658-9504

1-888-996-4777 (530) 889-8977  
FAX (530) 885-3785

WWW.OMEGADIAMOND.COM

SALES@OMEGADIAMOND.COM

## Operating/Safety Instructions

---

### **IMPORTANT: Read Before Operating Tool**

To avoid accident or injury, keep work area clean, well lit, and well ventilated.

Always wear eye, hand, and all other appropriate protective apparel when operating tool.

Keep away all other people, children, and small farm animals while operating tool.

If hose or tool is damaged, immediately discontinue use until damaged parts can be replaced.

Do not continue operation past the breaking point of the stone.  
Continuing past the breaking point of the stone may jam the tool.  
See the Troubleshooting section of this manual for more information.

Do not force bolts: Most have been assembled with a cyanoacrylate adhesive for safety.

## Operating Instructions

---

Note: Make sure your slab overhangs your workbench by at least 2 inches. (5 cm)

### *Preparing the stone*

1. Start by laying down a strip of thin **template material** on top of, and against the edge of, the stone. This protects the surface of the stone against any accidental scratching.
2. Lay a straight 2x4, or length of angle aluminum, parallel to the face of the stone, and about 3 inches from the edge as an **alignment guide**. You can use the chiseler to help set this alignment. This should give you a ¼ inch bite depth. \*
3. Mark every 3 inches (or 1½” if using the narrow tooth) on the guide

\* **Tune the bite depth to your specific type, and thickness, of stone. Laminated stone will require a deeper bite to shear through cleanly.**

### *Operating the jaws*

Due to the variety of pump options, operation of the jaws may be different as each pump has it's own control system.

Please read the manual shipped with your pump for more information about the controls.

Don't be afraid to experiment with opening and closing the jaws before trying to break the stone. Do this several times so you are intimately familiar with the operation of the jaws.

### *Breaking the edge*

1. Pick up the chiseler and **fully open the jaws**.
2. Clean all **debris and stone powder** from the nose and jaws of the chiseler.
3. Select, and install, the tooth type best suited for your job and stone.
4. Carefully set the chiseler onto the edge of the slab, setting down the **nose first**. Be sure not to scrape the jaws across the surface of the stone.

5. Gently push the chiseler so that the **alignment pins** are touching the alignment guide. If needed, lift the nose off the stone to prevent dragging across the surface and potentially marring the finish.
6. **Set the top jaw down.** This should cause the tooth to be resting on the template material. Push against the alignment bar at the mark.
7. Activate the pump to bring the **bottom jaw up slowly** until it starts to bite the stone.
8. Increase pressure until the stone makes a **“popping” sound**. Immediately stop applying further pressure, but do not release. Verify that both the top and bottom jaws have broken the stone. If not, then continue applying pressure until both sides have broken.
9. Once both sides are broken, immediately **release the pressure**, and remove the chiseler from the stone.
10. **Remove the debris** from the chiseler. Tilting the tool to one side is usually all that is required.
11. Continue this process along the edge until done. Overlapping the breaks by ¼ inch can help create a cleaner edge.

### ***Variations***

1. Instead of breaking a straight edge, try rotating the chiseler by 45 degrees and breaking the edge every 2 or so inches. This will create a kind of “mountain-edge” look.
2. Try varying the depth of cut. This can create a “stair-stepped” or “gear-like” look depending on technique. A tip though:
  1. Break a straight edge first,
  2. Then use the 45 technique (above) every 4 inches, breaking in a ½ inch (or so,) while alternating the angles every other break,
  3. Finally, break the indentations.
3. Scalloped edges: Install the Scallop, or Reverse Scallop, Tooth and break every 3 inches. Try combining forward and reverse for a wavy edge.
4. Come up with your own variations and send them to us via email: **ideas@omegadiamond.com**

## **Troubleshooting**

---

Pump is running, but jaw doesn't move or moves very slowly.

- *Verify that all hydraulic fittings are securely tightened.*
- *Check the hydraulic fluid level. See pump instructions.*

Hydraulic level is good, but the pump still moves slow.

- *Verify that the bottom nuts were NOT tightened. The bottom nuts should be no more than medium finger tight.*

Jaw tooth is chipped or dull.

- *Remove the carbide tooth by heating enough to weaken bond, cool tooth, then rotate the carbide to an undamaged edge and re-glue using epoxy resin. (CAUTION! Cool tooth before touching!)*

I have no undamaged edges left.

- *Contact our sales department for new Pitbull™ Stone Chiseler teeth.*

Hydraulic fluid sprays from connectors during operation!

- *Make sure all connectors are tightened securely, and are undamaged.*

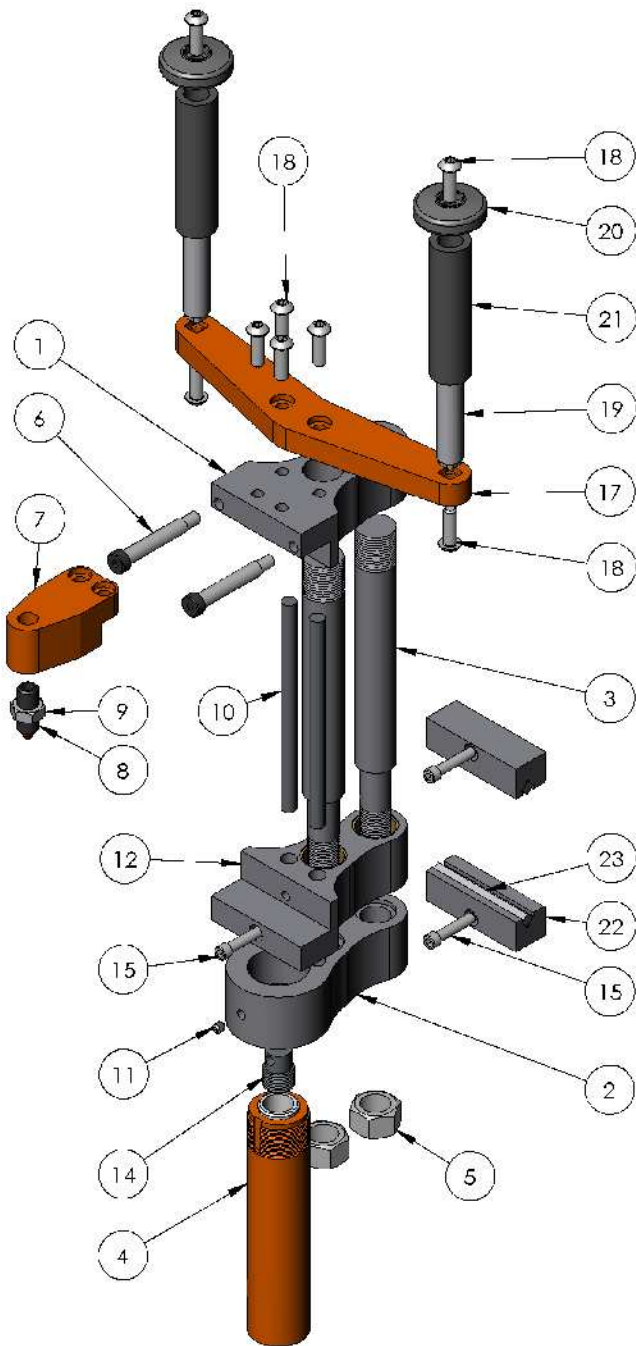
Everything is tight, but there is still a leak.

- *Contact our service technicians, and/or a local hydraulic specialist, to see if the problem can be easily repaired and what further steps to take.*

Everything is tight, there are no leaks, but the jaws will not move.

- *If the hose stiffens when the pump is running, then check for excessive stone powder being packed into the tool's mechanism.*
- *If the hose does not stiffen, then either call us, or your local hydraulic specialist, for more information. Your pump may be malfunctioning.*

If you have any questions, please call us toll free: **1 (888) 996-4777**



#	P/N	DESCRIPTION	QTY
1	2007122005	Upper Jaw	1
2	2008121602	Rod Tie Bar	1
3	2008121601	Guide Shaft	2
4	PL-1006	3" 5 Ton Piston	1
5	FA-0092	3/4-16 Hex Nut	2
6	FA-0085	5/16-18 x 2" Shoulder Bolt	2
7	2009051401	Levelling Nose	1
8	FA-0088	1/2-13 x 1.5" Spring Plunger	1
9	FA-0089	1/2-13 Lock Nut	1
10	2009022001	Stone Stop Rod	2
11	FA-0074	1/4-20 UNC x 0.25" SHSS	3
12	2007122006	Lower Jaw	1
14	2008100402	Piston Attaching Thread	1
15	FA-0099	1/4-20 x 1.25" Socket Head	3
17	2007122101	Handle Plate	1
18	FA-0098	5/16-18 x 1" Button Head	8
19	P121-015	Handle	2
20	P121-016	Handle Cap	2
21	SP-PB-HF	Handle Foam	2
22	2008112001	Laminated Stone Tooth Holder	2
23	SP-PB-T	Mining Grade Carbide Tooth	4

## Limited Warranty

---

All models of the Pitbull™ Stone Chiseler are warranted against defects in workmanship in materials for a period of twelve (12) months from date of purchase.

All returns will be subject to damage/usage fees. A refund is available only within 30 days of purchase. Freight charges are non-refundable.

OMEGA DIAMOND, INC. will, under warranty, provide free factory service including parts, labor, and **UPS GROUND SERVICE** back to the customer for any malfunction of its units. Returned units should be packed in the **ORIGINAL** shipping packaging. Customers are **required to call**, and obtain an **RMA number**, prior to returning any unit for either warranty or non-warranty service. Also, the problem may be field-repairable and we may be able to save you the inconvenience of shipping the unit back to us.

Shipments should be sent **freight prepaid and insured** for replacement cost to:

**OMEGA DIAMOND, INC.**

**10125 OPHIR RD.**

**NEWCASTLE, CA 95658-9504**

**PHONE: (530) 889-8977 – FAX: (530) 885-3785**

Please record the Date of Purchase and the Serial Number of your machine here for future reference:

**Date of Purchase:**

**Serial Number:**

## User Notes

---

**NOTICE:** *This product may have been field tested for quality control purposes; minor scratches and/or small amounts of stone dust on the tool can be expected.*

## MAINTENANCE

---

### ***Before every job:***

Add a small amount of oil to the air intake of the pump, AS SPECIFIED IN THE PUMP MANUAL.

### ***After every job:***

Clean dust and stone particles off of tool using a cloth or stiff fiber brush.

Carefully take off the bottom nuts, and slide off the bottom jaw and piston assembly. Wipe out the brass bushings and Guide Shafts with a clean cloth, then clean out the two holes where the Stone Stop Rods enter the Rod Tie Bar. The stone dust can get tightly packed in those holes and stop the smooth operation of the tool.

Carefully re-assemble the tool and put away where stone dust won't settle on it.

## Replacement Parts

---

Are your chiseler's teeth worn out? Want a spare? Need another machine? Give us a call and we will be happy to take your order.

Toll Free: 1 (888) 996-4777

Fax: 1 (530) 885-3785

Web: [OmegaDiamond.com](http://OmegaDiamond.com)

Email: [sales@omegadiamond.com](mailto:sales@omegadiamond.com)

# **Pitbull BigDog™ Stone Chiseler Manual**

---

Copyright© 2009 Omega Diamond, Inc.

All Rights Reserved.

## **\*\*\*WARNING\*\*\***

Not following all of these instructions and warnings included in this manual may result in Injury or Death. Omega Diamond, Inc. and all related Companies and personnel cannot be held responsible for any damages incurred by the misuse, and/or improper maintenance of this product.

The PitBull Stone Chiseler and the Omega Diamond Logo are legal trademarks of Omega Diamond, Inc. All Rights Reserved.

**This Document may not be Copied or Distributed, in Part or in Whole, Manually or Digitally, without the written prior Consent of the Copyright Holder.**