

THE PITBULL BIGDOG™

Hydraulic Stone Chiseler



Operation, Safety, and Instruction Manual

v20150108



TM

ΩMEGA DIAMOND, INC.

10125 OPHIR RD
NEWCASTLE, CA 95658-9504

1-888-996-4777 (530) 889-8977
FAX (530) 885-3785

WWW.OMEGADIAMOND.COM

SALES@OMEGADIAMOND.COM

Safety Instructions

IMPORTANT: Read Before Operating Tool

To avoid accident or injury, keep work area clean, well lit, and well ventilated.

Always wear eye, hand, and all other appropriate protective apparel when operating tool.

Keep away all other people, children, and animals while operating tool.

If hose or tool is damaged, immediately discontinue use until damaged parts can be replaced.

Do not continue operation past the breaking point of the stone.

Continuing past the breaking point of the stone may jam the tool.

See the Troubleshooting section of this manual for more information.

Do not force bolts: most have been assembled with an adhesive for safety.

Operating Instructions

Note: Make sure your slab overhangs your workbench by at least 2 inches. (5 cm)

Preparing the stone

1. Start by laying down a strip of thin **template material** on top and against the edge of the stone. This protects the surface of the stone against any accidental scratching.
2. Lay a straight 2x4, or length of angle aluminum, parallel to the face of the stone, and about 3 inches from the edge as an **alignment guide**. You can use the chiseler to help set this alignment. This should give you a ¼ inch bite depth. *
3. Mark every 3 inches (or 1½” if using the narrow tooth) on the guide

Stone thickness	Recommended bite depth
2 cm	1/4 inch
3 cm	5/16 inch
4 cm	1/2 inch
6 cm	3/4 inch
8 cm	7/8 inch

* **Tune the bite depth to your specific type and thickness of stone. Laminated stone will require a deeper bite to shear through cleanly. No bite should ever exceed 1 1/8 inch; stone should NEVER rest against Stone Stop Rods.**

Operating the jaws

Due to the variety of pump options, operation of the jaws may be different as each pump has it's own control system.

Please read the manual shipped with your pump for more information about the controls.

Don't be afraid to experiment with opening and closing the jaws before trying to break the stone. Do this several times so you are intimately familiar with the operation of the jaws.

Breaking the edge using the laminated stone jaw

1. Pick up the chiseler and **fully open the jaws**.
2. Clean off all **debris and stone powder** from the nose and jaws of the chiseler.
3. Select, and install, the tooth type best suited for your job and stone.

4. Carefully set the chiseler onto the edge of the slab, setting down the **nose first**. Be sure not to scrape the jaws across the surface of the stone.
5. Gently push the chiseler so that the **alignment pins** are touching the alignment guide. If needed, lift the nose off the stone to prevent dragging across the surface and potentially marring the finish.
6. **Set the top jaw down**. This should cause the tooth to be resting on the template material. Push against the alignment bar at the mark.
7. Activate the pump to bring the **bottom jaw up slowly** until it starts to bite the stone.
8. Increase pressure until the stone makes a **“popping” sound**. Immediately stop applying further pressure, but do not release. Verify that both the top and bottom jaws have broken the stone. If not, then continue applying pressure until both sides have broken.
9. Once both sides are broken, immediately **release the pressure**, and remove the chiseler from the stone.
10. **Remove the debris** from the chiseler. Tilting the tool to one side is usually all that is required.
11. Continue this process along the edge until done. Overlapping the breaks by $\frac{1}{4}$ inch can help create a cleaner edge.

Variations

1. Instead of breaking a straight edge, try rotating the chiseler by 45 degrees and breaking the edge every 2 or so inches. This will create a kind of “mountain-edge” look.
2. Scalloped edges: Install the Scallop, or Reverse Scallop Tooth and break every 3 inches. Try combining forward and reverse for a wavy edge.
3. Come up with your own variations and send them to us via email: **ideas@omegadiamond.com**

Troubleshooting

Pump is running, but jaw doesn't move or moves very slowly.

- Verify that all hydraulic fittings are securely tightened.
- Check the hydraulic fluid level. See pump instructions.

Hydraulic level is good, but the pump still moves slow.

- Verify that the bottom nuts were NOT tightened. The bottom nuts should be no more than medium finger tight.

Jaw tooth is chipped or dull.

- Remove the carbide tooth by heating enough to weaken bond, cool tooth, then rotate the carbide to an undamaged edge and re-glue using epoxy resin. (CAUTION! Cool tooth before touching!)

I have no undamaged edges left on the carbide.

- Contact our sales department for new PitBull™ Stone Chiseler teeth.

Hydraulic fluid sprays from connectors during operation!

- Make sure all connectors are tightened securely, and are undamaged.

Everything is tight, but there is still a leak.

- Contact our service technicians, and/or a local hydraulic specialist, to see if the problem can be easily repaired and what further steps to take.

Everything is tight, there are no leaks, but the jaws will not move.

- If the hose stiffens when the pump is running, then check for excessive stone powder being packed into the tool's mechanism.
- If the hose does not stiffen, then either call us, or your local hydraulic specialist, for more information. Your pump may be malfunctioning.

If you have any questions, please call us toll free: **1 (888) 996-4777**

MAINTENANCE

Before every job:

Add a small amount of oil to the air intake of the pump, AS SPECIFIED IN THE PUMP MANUAL.

After every job:

Clean dust and stone particles off of tool using compressed air and a brush. No need to disassemble or remove any nuts or bolts. The bottom bolt or nut is not removable.

Replacement Parts

Are your chiseler's teeth worn out? Want a spare? Need another machine? Give us a call and we will be happy to take your order.

Toll Free: 1 (888) 996-4777

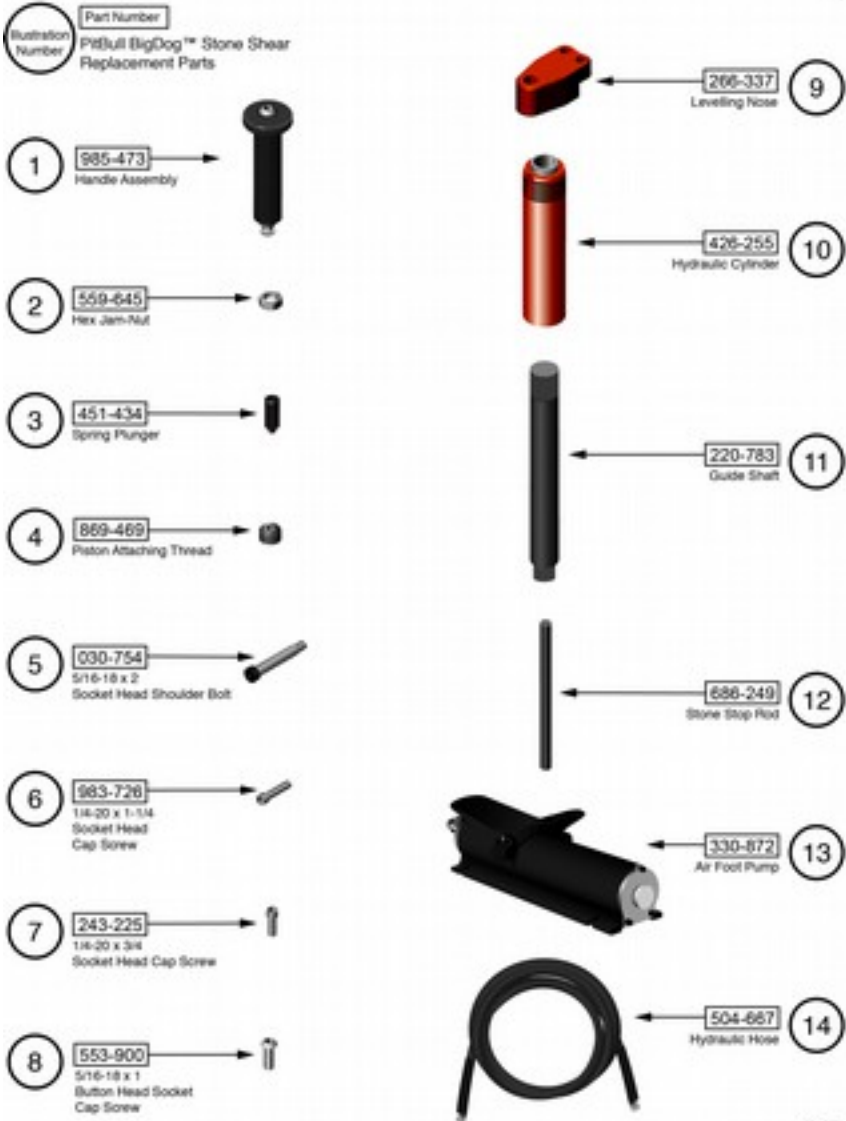
Non-USA: +1.530.889.8977

Fax: 1 (530) 885-3785

Web: OmegaDiamond.com

Email: sales@omegadiamond.com

PitBull BigDog™ Stone Chiseler Parts List

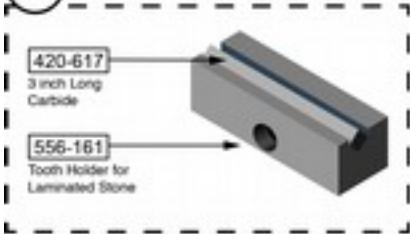


See omegadiamond.com/721-820 under Attached Files for the most current Replacement Parts List.

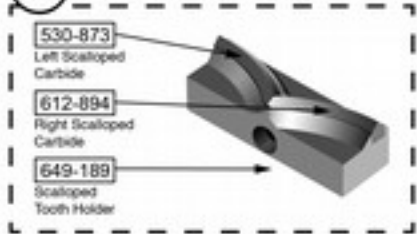
Illustration
Number

Part Number
Pitbull BigDog™ Stone Shear
Replacement Parts

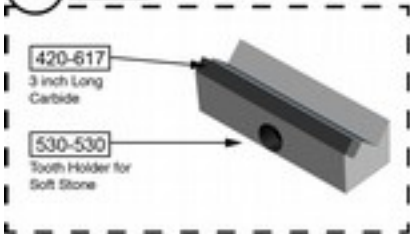
15 980-304 Teeth Set for Laminated Stone



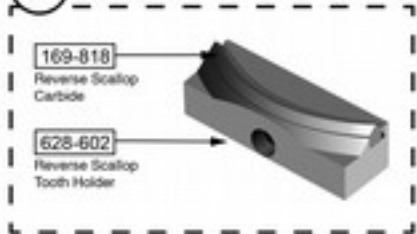
18 944-481 Scallop Teeth Set



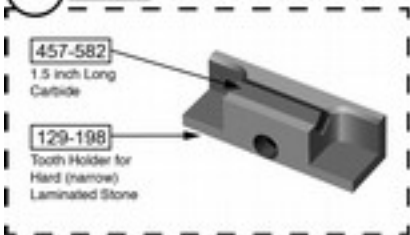
16 385-421 Teeth Set for Soft Stone



19 076-830 Reverse Scallop Teeth Set



17 673-385 Narrow Teeth Set for Hard Stone



Each Set includes two tooth holders with their respective carbide.

0214821

See omegadiamond.com/721-820 under Attached Files for the most current Replacement Parts List.

PitBull BigDog™ Stone Chiseler Teeth

All PitBull™ teeth sets include top and bottom holders with carbide.

Laminated Stone Teeth Set:

Used for shearing straight edges in laminated stone. To create a mountainous look, rotate the chiseler by 45 degrees and break the edge every two or so inches.



Soft Stone Teeth Set:

This shape excels in chiseling soft stone.



Narrow Teeth Set:

This tooth style is for laminated super hard stone that requires the most tonnage possible. The narrow tooth concentrates the power of the chiseler into a smaller area for maximum force. **Not** recommended for soft stone. Replacement part numbers: 673-385 for set. 457-582 for one carbide tooth only.



Scallop Teeth Set:

These teeth are for producing scalloped edges on solid or laminated stone.



Reverse Scallop Teeth Set:

These teeth are for producing reverse scalloped edges on solid or laminated stone. Alternate between the Scallop Set and the Reverse Scallop set for a wavy edge.



Limited Warranty

For warranty information please visit our web site at omegadiamond.com/warranty

Please record the Date of Purchase and the Serial Number of your machine here for future reference:

Date of Purchase:

Serial Number:

User Notes

NOTICE: *This product may have been field tested for quality control purposes; minor scratches and/or small amounts of stone dust on the tool can be expected.*

Pitbull BigDog™ Stone Chiseler Manual

Copyright© 2009 Omega Diamond, Inc.

All Rights Reserved.

*****WARNING*****

Not following all of these instructions and warnings included in this manual may result in Injury or Death. Omega Diamond, Inc. and all related Companies and personnel cannot be held responsible for any damages incurred by the misuse, and/or improper maintenance of this product.

The PitBull Stone Chiseler and the Omega Diamond Logo are legal trademarks of Omega Diamond, Inc. All Rights Reserved.

This Document may not be Copied or Distributed, in Part or in Whole, Manually or Digitally, without the written prior Consent of the Copyright Holder.