

THE BLUE RIPPER™

Rail Saw



(Blade shown might not ship with saw or be available.)

Operation, Safety, and Instruction Manual



ΩMEGA DIAMOND, INC.

10125 OPHIR RD
NEWCASTLE, CA 95658-9504

1-888-996-4777 (530) 889-8977
FAX (530) 885-3785

WWW.OMEGADIAMOND.COM

SALES@OMEGADIAMOND.COM

Operating/Safety Instructions for Blue Ripper

IMPORTANT: Read Before Operating Equipment

To avoid accidents or injury, keep work area clean, well lit, and well ventilated.

Always wear eye, hand, and all other appropriate protective apparel when operating saw.

Keep all other people, children, and small farm animals away while operating saw.

Use only properly grounded, GFCI protected electrical outlet.

Warning: Do NOT turn machine on or off with the GFCI safety switch. Turn machine toggle switch off before resetting the GFCI.

Ensure that the electrical system in your work location meets all codes and regulations prior to operating saw.

Do not modify the plug on the saw or use any adapters between the saw and the electrical outlet.

Do not allow water to run directly on the motor or any other electrical component.

If power cord or any other part of the saw is damaged, discontinue use immediately until damaged parts can be replaced.

Keep saw blade clear of clothing, jewelry, hair, cords, hoses, or any other object while in operation.

Ensure that the saw is switched off (switch down) before plugging or unplugging it.

Ensure that blade is clamped firmly between flanges and spinning freely prior to operating.

Do not stand directly in front of or behind the saw while in operation.

Keep hands on top of the saw and away from the blade while operating.

Never force the saw if it seems to be stuck or if it seems to be moving with difficulty.

Use only blades of correct size and shape. Do not modify blades.

Do not force bolts; most have been assembled with a cyanoacrylate adhesive for safety.

Operating Instructions

Installing/Replacing Blade:

Note: This saw is designed for stone and masonry applications exclusively. Use only 14" diamond blades with 60mm arbor hole.

Place the saw on the rail (with rail rubber side down) to provide clearance for installing the blade. Turn height adjusting hand wheel clockwise to allow proper blade clearance. (If the hand wheel is hard to turn, loosen jamb knob on the right side of guidepost.)

Remove the left-hand threaded nut holding the flanges to the shaft. If nut is tight, use the included wrench to turn it. (To lock the flange, press the flange lock pin on the back of the blade guard and rotate the flange until the pin drops into the hole on the rear flange.)



Flange lock pin located on back of blade guard.

Remove the front flange (and old blade, if applicable) and place the new blade against the rear flange. Ensure that the blade is flat against the rear flange with rotation direction arrow matching the arrow on front guard (clockwise on most models).

Replace the front flange so the blade is sandwiched between the two flanges. Replace the left-hand threaded nut and tighten with included wrench. (To lock the flange, press the flange lock pin on the back of the blade guard and rotate the flange until the pin drops into the hole on the rear flange.)

Under normal circumstances the interior flange should not have to be removed. If it seems necessary, please call us @ (888) 996-4777 before trying to do so.

Operation:

- For most cutting operations, it is recommended that you lay your slab on top of a foam sheet at least 1" thick (1.5" is preferred for less crumbling)
- Lay the rail on the slab along the line to be cut. For longer cuts, connect the two standard six-foot rails with the supplied bolts. (One-piece stainless steel rails up to 20 feet long are also available.)
- Allow the rails to overhang enough for the blade to clear the stone where you will begin your cut. For long cuts it may be necessary to clamp the rails to the stone to prevent wandering. Clamp onto provided angle bolted to one side of rail.
- Adjust the blade height to allow clearance through the thickness of the material being cut. The deeper the blade cuts through the stone, the easier and faster the blade will cut.
- Turn the water valve on and adjust desired flow.
- Turn saw on before blade touches the stone. Do not stand directly in front of or behind the blade while cutting.
- Slowly begin your cut by pushing the saw into the stone. If you enter the cut too fast, the saw will bog down and may trip the electrical breaker.
- Once you have initiated the cut you must not go too slow or the diamonds on the blade will glaze over, and the cutting speed will drop dramatically. The speed of cut should be just below the point of bogging down the motor.

Example: On a 2 cm thick slab of Absolute Black granite try to maintain a cutting speed of about 10 fpm. The saw will cut faster in softer materials and slower in harder materials.

Troubleshooting

Blade seems to be cutting slowly or not cutting at all?

Suggestions: Make sure the blade is mounted to spin in the proper direction (align arrow on blade with arrow on face guard).

The material being cut may have "loaded" or "glazed" the diamond. Use a dressing stone or "green stone" to free the diamond.

Blade binds or "freezes."

Suggestions: The blade may be cutting at a slight angle. Check alignment. Make sure that the saw is rolling freely on the rails and the rails are not damaged or bent. Make sure that the motor is securely fastened to the mounting plate.

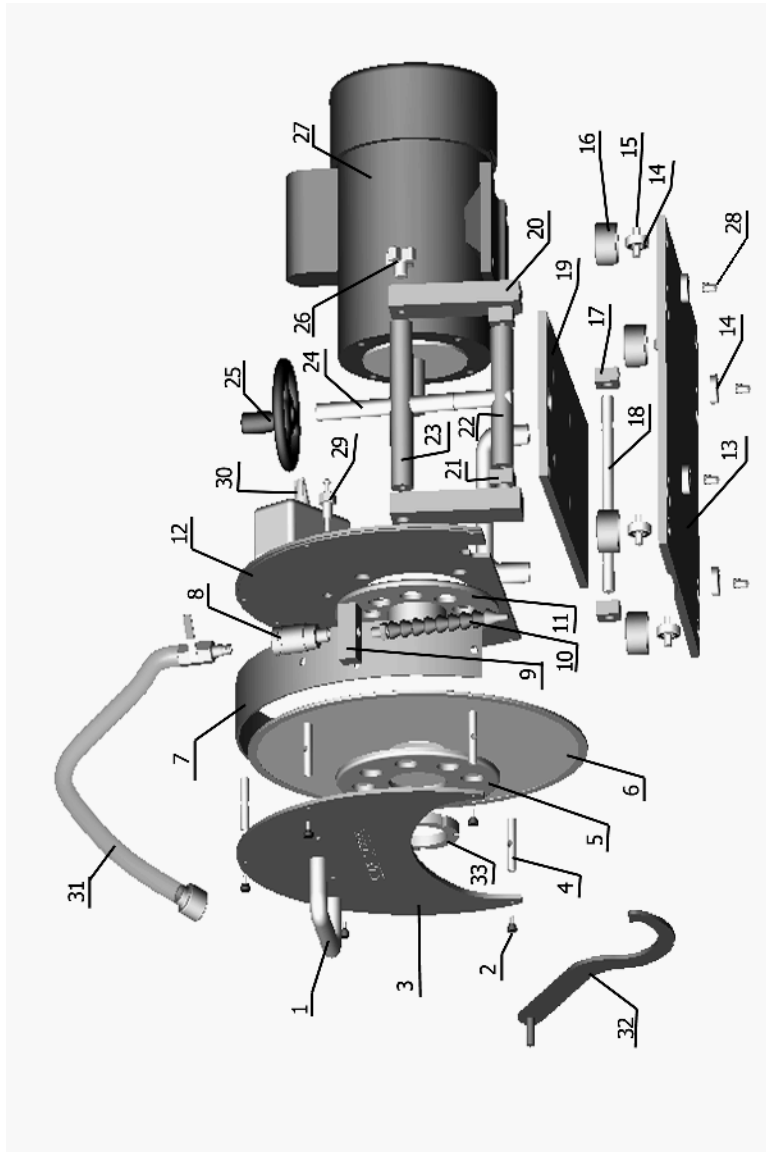
Saw shuts off after a few minutes of use and/or fails to turn on at all.

Suggestions: Check circuit breaker. If that is on and it still fails to start, the motor may have overheated. Allow time to cool, then push in Heat Overload button, you will then hear a dry click sound when saw has cooled down enough to restart.

Height adjusting hand wheel is difficult to turn.

Suggestions: Loosen the jamb knob on the right side of the height adjustment post. Spray W-D40 on slide areas.

For any other problem please call us toll free:
1 (888) 996-4777



Item #	Description	Omega Diamond P/N:
1	Handle (2 per saw)	SP-BRS-HDL
2	Guard Knobs (5 per saw)	FA-0003
3	Outer Blade Guard (1 per saw)	SP-BRS-OBG
4	Guard Posts (5 per saw)	SP-BRS-GP
5	Outer Blade Hub (1 per saw)	SP-BRS-OBH
6	Saw Blade (1 per saw)	BL-BR-14-BL
7	Curved Blade Guard (1 per saw)	SP-BRS-CBG
8	Quick-Release - Female (1 per saw)	PL-0008
9	Coolant hose mounting post (1 per saw)	SP-BRS-CMP
10	Snap coolant line (1 per saw)	PL-1000+1+2
11	Rear Blade Hub (1 per saw)	SP-BRS-RBH
12	Rear Blade Guard (1 per saw)	SP-BRS-RBG
13	Base Plate (1 per saw)	SP-BRS-BASE*
14	Bearings (8 per saw)	BE-S6000-2RS
15	Traverse Bearing Shaft (4 per saw)	SP-BRS-TBS
16	Bearing Cover (4 per saw)	SP-BRS-BC
17	Rear Hinge Block Mounts (2 per saw)	SP-BRS-RHBM
18	Hinge Pin (1 per saw)	SP-BRS-HP
19	Elevation Plate (1 per saw)	SP-BRS-EPL
20	Elevation Posts (2 per saw)	SP-BRS-EP
21	Front Hinge Block Mounts (2 per saw)	SP-BRS-FHBM
22	Lower Elevation Control Post (1 per saw)	SP-BRS-LEC
23	Upper Elevation Control Post (1 per saw)	SP-BRS-UEC
24	Vertical Control Shaft (1 per saw)	SP-BRS-VCS
25	Height Adjustment Knob (1 per saw)	SP-BRS-VCSHDL
26	Elevation Post Knob (1 per saw)	SP-BRS-EPK
27	Motor (1 per saw)	MO-0000/MO-0002
28	Alignment Bearing Shaft (4 per saw)	SP-BR-ABS
29	Spindle lock (1 per saw)	SP-BRS-SL
30	on/off switch (1 per saw)	SP-BRS-SWITCH
31	hose (1 per saw)	SP-BR-HOSE
32	wrench (1 per saw)	SP-BRS-WRENCH
33	nut (1 per saw)	SP-BRS-NUT

* Item(s) Not For Sale.

Limited Warranty

All models of the Blue Ripper are warranted against defects in workmanship in materials for a period of twelve (12) months from date of purchase.

All returns will be subject to damage/usage fees. A refund is available only within 30 days of purchase. Freight charges are non-refundable.

OMEGA DIAMOND, INC. will, under warranty, provide free factory service including parts, labor, and UPS GROUND SERVICE back to the customer for any malfunction of its units. Returned units should be packed in the ORIGINAL shipping packaging. Customers are required to call prior to returning any unit for either warranty or non-warranty service. We may be able to save you the inconvenience of shipping the unit back to us.

Shipments should be sent freight prepaid and insured for replacement cost to:

OMEGA DIAMOND, INC.

10125 OPHIR RD.

NEWCASTLE, CA 95658-9504

PHONE: (530) 889-8977 – FAX: (530) 885-3785

Please record the Date of Purchase and the Serial Number of your machine here for future reference:

Date of Purchase:

Serial Number:

Notice: This product may have been field tested for quality control purposes.

USER NOTES:

Spin and Machine Motion Direction



Is your blade worn out? Want a spare? Need extra rail? Give us a call and we will be happy to take your order.

Toll Free: 1 (888) 996-4777

Fax: 1 (530) 885-3785

Web: OmegaDiamond.com

Email: sales@omegadiamond.com

Cut Stone by Moving Machine in either Direction

TIP:

Cut about 1/4 inch (6mm) deep moving the saw from left to right, then go to full depth and cut moving from right to left.

This technique reduces surface chipping and provides a straighter cut as the blade has a groove to follow to prevent “wandering.”

Blue Ripper Rail Saw Manual

Copyright© 2006, 2008 Omega Diamond, Inc.
All Rights Reserved.

*****WARNING*****

Not following all of these instructions and warnings included in this manual may result in Injury or Death. Omega Diamond, Inc. and all related Companies and personnel cannot be held responsible for any damages incurred by the installation, use, and/or maintenance of this product.

The Blue Ripper, Blue Ripper Rail Saw and the Omega Diamond Logo are legal trademarks of Omega Diamond, Inc.

This Document may not be Copied or Distributed, in Part or in Whole, Manually or Digitally, without the prior Consent of the Copyright Holder.