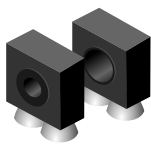


Illustration
Number

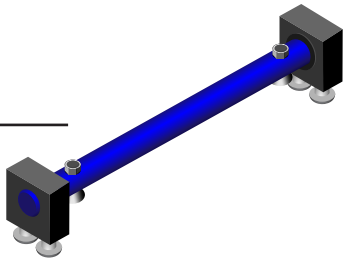
Part Number

Items are not to scale

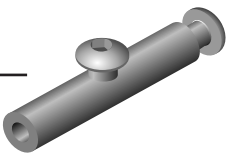
1 050-560
Vertical Adjustment
Hinge Block Mount
Assembly



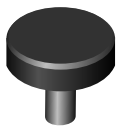
2 056-649
Lift System Main
Hinge Assembly



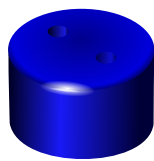
3 077-675
Guard Separator




4 099-094
Guard Knob Assembly




5 176-799
Bearing Cover



6 373-734
Flange Nut
(right-hand thread)



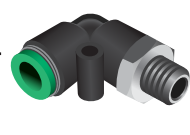
7 476-566
Spindle Lock
Assembly




8 596-912
8mm Push Fitting/Connector



9 009-622
8mm Elbow Push
Fitting/Connector

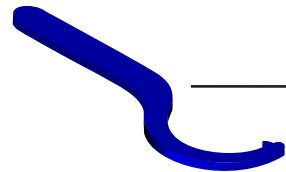


490-792
Alignment Bearing
Assembly



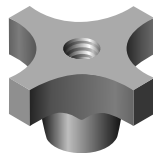
10

534-707
Blue Ripper Sr. Wrench



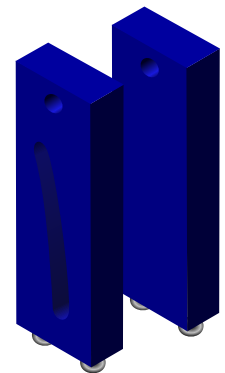
11

695-826
Elevation Post Knob




12

722-078
Vertical Adjustment
Post Assembly



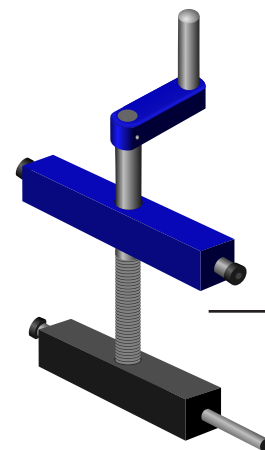
13

819-213
Traverse Bearing
Assembly




14

MK2-K18
Elevation System
Repair Kit



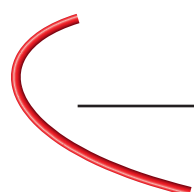
15

294-376
Brass Quick Disconnect Female



16

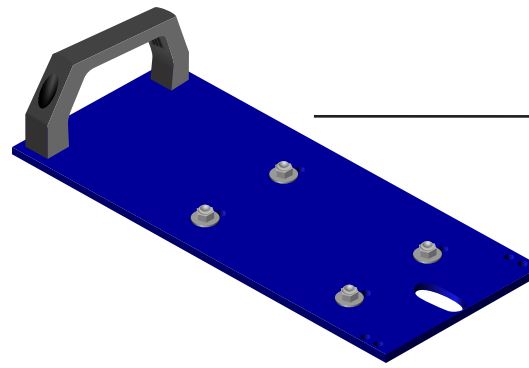
094-620
Polyurethane Tubing
(sold per inch)



17

Illustration Number Part Number

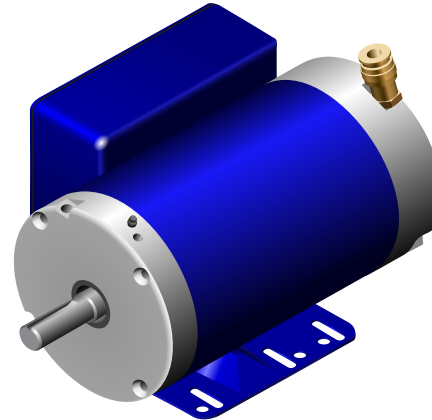
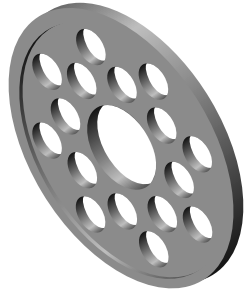
18 729-187
Rear Blade Flange
(right-hand thread)



936-764
Lift System Hinge
Plate Assembly

23

19 461-503
Outer Blade Flange

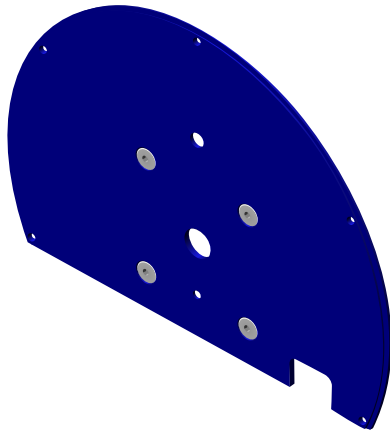


977-609
2hp 1750 rpm
Dayton air cooled
induction motor
734-745
3hp 1750 rpm
Baldor air cooled
induction motor
144-962
5hp 3450 rpm
Custom water cooled
induction motor

24

Appearance of motor
may change with model

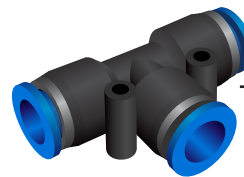
20 407-044
Rear Guard
Assembly



110-055
Hose Kit

25

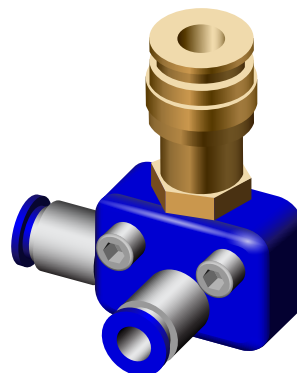
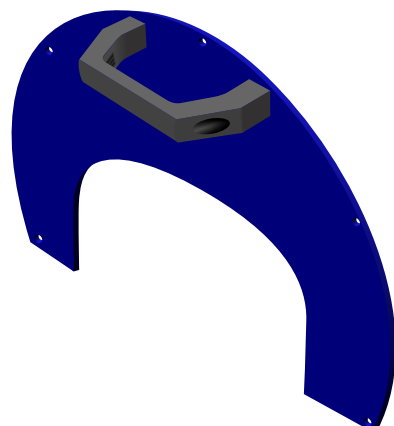
21 833-324
HDPE Curved
Blade Guard



700-519
8mm Tubing F-F-F Tee
used on 5hp saws

26

22 578-771
2HP Front Guard
472-082
3HP Front Guard
549-903
5HP Front Guard



361-312
Water Manifold Assembly
for 2 & 3 HP Saws

27